

# SITEMONITOR II MONITOR & CONTROL RACK

The **SITEMONITOR II** is a monitoring unit for the professional use. The 19" rack unit can be used for monitoring both electronic equipment and rooms and is equally well suited for industrial monitoring purposes.

The **SITEMONITOR II** provides 64 digital inputs for various electrical contact indicators like smokealarms, motion detectors, door intrusion detectors and alarm switches, etc..

Using its simple plug & play connections for different sensors, a quick and safe installation is guaranteed. The electrical connections are located at the rear side of the device (terminal strips). The complete configuration of the **SITEMONITOR II** can be realized via web-browser.

Additional markers afford the programming of alarms, which are composed out of several inputs. The states of the inputs are displayed via illuminating diodes at the front side.

The measured values can be visualized using a web-browser or the optional **UNMS** Network Management Software. The support of the default **SNMP** protocol is included.

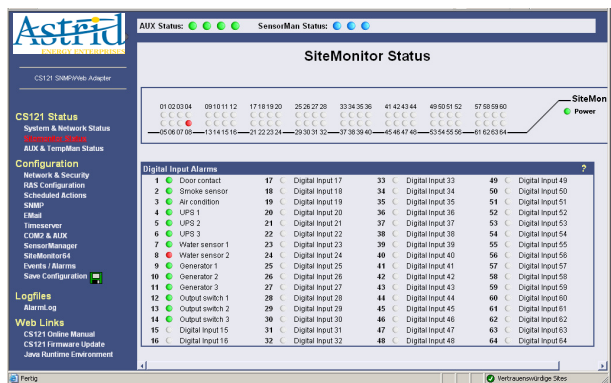
More interesting functions are available via the LAN connection. The **SITEMONITOR II** provides Emailing and network messaging.

In addition to the LAN connection, the **SITEMONITOR II** got an RS-232 interface for the connection to serial devices like an UPS. The **SITEMONITOR II** provides the RS232 protocol to support for more than thousand UPS devices and thus, the **SITEMONITOR II** is the unique device worldwide, which is able to analyze almost every UPS protocol with all their state and measurement values.

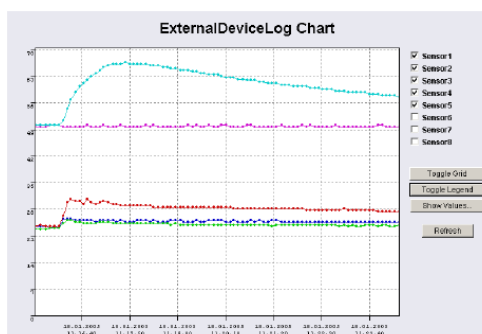
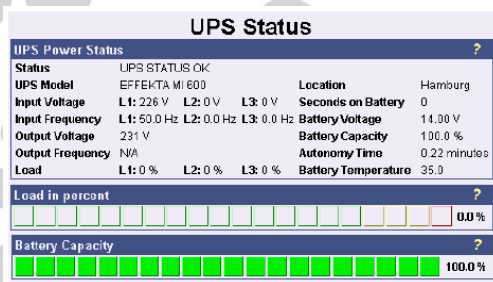
Furthermore it is possible to monitor or rather shutdown servers with the additional **RCCMD** client software. An integrated **SMTP** client is able to send alarms via email and/ or SMS. All described possibilities of the alarm forwarding can be individually configured for every occurring event.

The remote monitoring & control rack possesses an own logging system (non-volatile memory). Every single alarm will be logged with date and time stamped.

The analog measurement values of the connected UPS or of the optional **SENSORMANAGER** will be logged and displayed via web-browser. The optional **UNMS** Network Management Software provides a prolong logging of the data. If an access to the **SITEMONITOR II** via telephone network is desired, you can optional use an analog modem or GSM modem



SITEMONITOR II Status Display



# SITEMONITOR II MONITOR & CONTROL RACK

## TECHNICAL DATA

- 64 digital inputs (opened / closed configurable)
- 8 outputs (open collector, 24V, 100mA)
- 10 / 100Mbit autosensing network connection
- Timer for scheduled output control, start-up settings for every output (On/Off)
- Supported Protocols: E-Mail, Telnet, HTTP, SNMP, SNTIP, RFC868, Modbus Over IP, UPSTCP, DHCP, DNS, FTP, TELNET
- RS-232 interface for other devices
- Remote configuration via Web browser or UNMS software (optional)
- LED Alarm display, LED operating display
- Battery braced real-time clock with time server synchronization
- Non-Volatile memory for Alarm
- Integrated Email-client
- With the use of 2 X SM\_64\_CON\_R Terminals (connected to AUX 1 and AUX 2 of the SITEMONITOR) the user may configure up to 8 outputs, eg. as reaction to the input alarms or the 64 contacts. The configuration interface is simple and easy to use via the input logic the user can monitor and manages combined events (AND/OR logic) in case of alarms
- Meets CE EMV and the directive WEEE 2002/96/EC and RoHS 2002/95/EC

## OPTIONS

- Analog modem for the remote control and integration into the RASCONTROL system (only, if COM1 is not in use)
- Smoke/fire alarms, motion detectors, door contacts etc., connection of any other alarm contact indicator
- Connection of CON-IO terminals for the simple switching of the outlets.
- UNMS Network Management Software

## SENSORS

- Temperature sensor, Combo sensor for temperature and humidity, Water- and Humidity sensor, True RMS-Converter AC Voltage, True RMS-Converter AC Current, Relay Box, Audible alarm indicator, Optical alarm indicator, Breakeage of glass sensor, Motion detector, Smoke detector, Door contact, Power sensor

