

FarEyes Enhanced

System Introduction

FarEyes Enhanced is one of the most advanced and comprehensive network video management and have developed a range of products that include network video servers, network video management server software and client application software. These products are highly-scalable, suitable for city-wide applications and large corporate enterprise requirements right down to small residential installations.

FarEyes Enhanced has developed a highly featured video and audio digital transmission solution with powerful management features and robust system performance that is modular and easy to expand for any sized requirement.

Representing the next generation of network video management, FarEyes Enhanced Management Systems have been frequently used in city-wide applications, power stations, banking institutions, educational institutions, coal mines, oil fields and public events.

Features

- Easy network organisation
- Supports large-scale distributed architecture managed by a centralised monitoring solution
- Powerful network organisation with collapsible tree structure
- Compatible with multiple methods of networking

Stable Design

- Server software supports automated backup service to ensure data is protected at all times
- Supports network fault detection and recovery to prevent network-wide failures
- Features capacity for full recording server redundancy

Excellent Performance

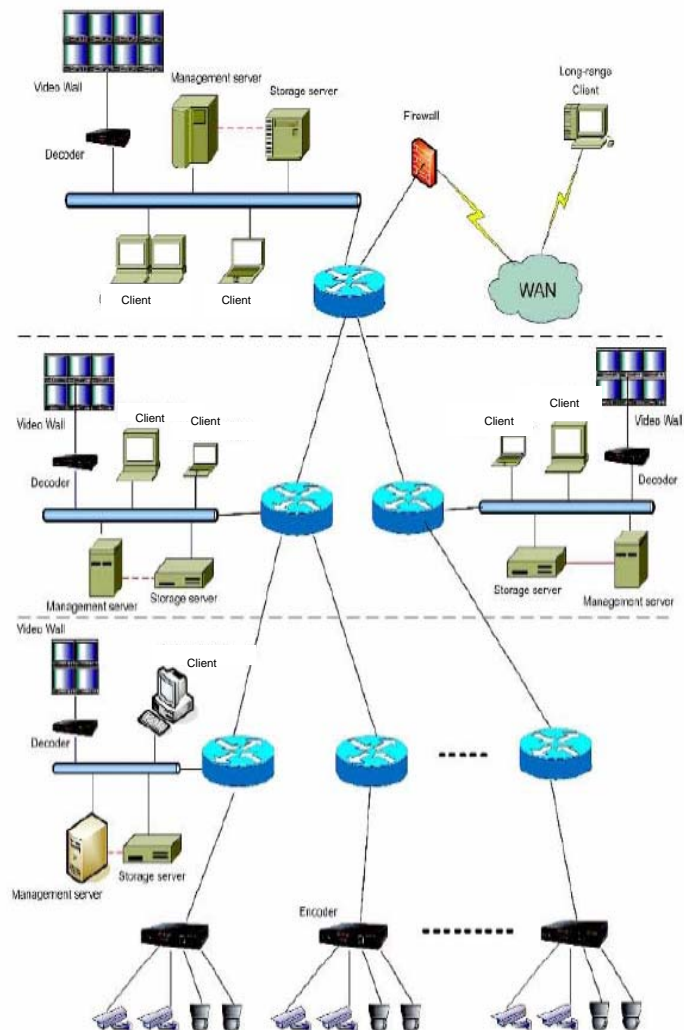
- Median stream technology supports high performance storage and transmission
- Distributed server architecture allows for wide-scale storage and transmission requirements

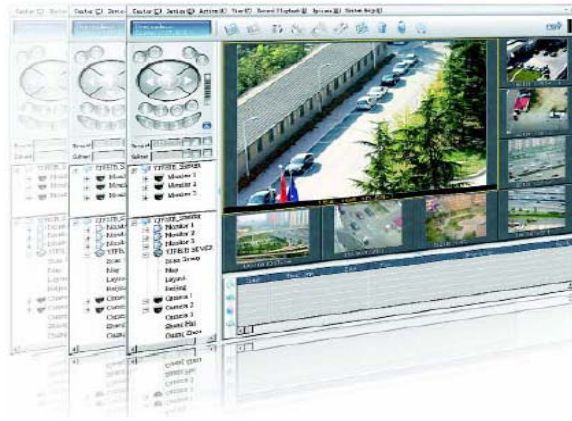
Easy Maintenance

- Individual device management and group access permissions
- Device heart beat management with real-time notification of encoder and decoder status
- Capable of automatically solving any application failure instantaneously to ensure the system continues to function.
- Detailed log and real time fault notification

Easy Integration

- Supports OCX Active for third party integration
- Supports data collection
- Features detailed data search functionality





MANAGEMENT SOFTWARE

SERVER

Management Service

The management service is the centre of the FarEyes Enhanced control system. Designed to safeguard all equipment and resources safely and effectively the management service includes application management, equipment management, server connectivity and switching, user management, log management, hardware monitoring and watchdog, client online management and other related modules

Directory Service

Supports distributed storage architecture with a multi-server directory service. Simplifying large-scale equipment management, the directory service supports multi-server data synchronization and automated backups to safeguard data integrity, provide real-time data retrieval and ensure a robust network structure. The distributed nature of the directory service prevents information from being inaccessible due to network failure and prevents corrupted data.

Retransmission Service

Each server supports the collection and retransmission of up to 400 individual video streams. The distributed nature of the retransmission maximises network performance by avoiding network bottlenecks and jams and working with a relay retransmission pattern that optimizes application level routing and eliminates the wastage of network bandwidth.

Storage Management Service

Each server supports storage for up to 128 video streams at 25F/s and can support direct attached storage (DAS), network attached storage (NAS) and storage area networks (SAN). These flexible storage configurations reduce overall storage costs and allow for the configuration of storage redundancy which lessens the risk of data loss. Support of indexing services allow efficient searching of video and audio data which can be linked to external data sources.

CLIENT

Browser

- Multiple viewing layout choices:
1/4/6/7/8/9/10/12/13/16 windows
- Easy creation and browsing of electronic maps
- Supports asynchronous replay of up to sixteen channels of video
- Supports synchronous replay of up to four channels of video
- Supports customisable layouts and manual or automatic switching between saved layouts
- Supports management of sequencing display
- Supports real-time log and online query of the log
- Supports multiple modes of alarm response
- Supports bi-directional audio transmission from device to client and client to device
- Supports remote control of PTZ by PC and CCTV keyboards
- Supports virtual matrix

Player

- Supports video on demand transmission of video files
- Supports multiple search methods
- Supports export to AVI function
- Supports the replay of video files on analogue video wall
- Supports asynchronous replay with time-bar
- Supports snap-shot video search function

Management Tools

- Control and management of system devices
- Configuration and management of all individual device parameters
- Multiple levels of user management
- Scheduling and management of video and alarm devices
- Management of electronic maps
- Management of CCTV keyboards
- Management of multiple sequencing groups
- Management of customisable layouts
- Management of bi-directional audio transmission

Product Features

- Highly efficient PixelWorks BSP15-350 CMOS chip.
- Hardware-based MPEG-4/H.264 compression technology.
- TCP/IP and UDP/IP transmission protocol supported..
- Self-adaptive filter technology provides transmission latency of less than 300ms.
- Real time data stream transmission technology reduces the frame delay time below to 300ms.
- Selectable dynamic and fixed frame rate transmission modes able to achieve steady transmission of data or frame-rates.
- De-interlace technology eliminates any jagged sawtooth effects and video transmission delays.
- Multi-stream technology allows customised transmission rates for different applications using the same video channel.
- Multiple zone motion detection.
- Super-imposed OSD characters and date and time on video.
- Six channel dry contact inputs and three relay outputs.
- Bi-directional stereo audio with selectable PCM or G.723 encoding.
- Hardware watchdog can detect abnormal operation and quickly resume normal operation automatically.

VIDEO SERVER



Product Summary

The Video Server use highly efficient hardware-based MPEG4 compression technology which is able to encode one video channel at 4CIF(704×576), two video channels at 2CIF (704×288) or four video channels at CIF(352x288) in real time with a number of flexible parameters.

The Video Server are based on the TCP/IP and UDP/IP protocols. Also utilises the VSIP protocol which is designed specifically for video and audio transmission. The Video Server can integrate with management software to allow a large distributed video monitoring system that can support intelligent network traffic flow.

Technical specification

| | | |
|-------------------------|----------------|--|
| Video Model | | E1504T / E1502T / E1500T series |
| Video | Video Input | Four Channel / Two Channel / Single Channel |
| | Resolution | CIF, 2CIF, 4CIF (selectable) |
| | Frame Rate | NTSC: ≤30F/S PAL: ≤25F/S |
| | Delay | <300ms (Encoder) |
| | Bandwidth | 30Kbps to 4Mbps adjustable |
| Serial Port | Communication | Port1: RS232 Port2: RS-422/485 2/4 line |
| | Connector | Port1: DB-9 Port2: Pluggable Screw-terminal Strip |
| | Operation Mode | Transparent Serial Port Supporting any Asynchronous Serial Protocol (Can support other protocols depending upon requirement) |
| General I/O | Alarm Input | 6 Dry Contact Inputs |
| | Alarm Output | 3 Relay Contact Outputs |
| | Connector | Pluggable Screw-terminal Strip |
| Network | Network Type | Ethernet 10/100Base-T |
| | Connector | RJ-45 |
| | Protocol | Transmit: RTP/IP, UDP/IP, TCP/IP, VSIP or Multicast IP |
| | Security | Password protected |
| Power | Supply Voltage | 5VDC ± 10% |
| | Consumption | Maximum 7.5W (5VDC Maximum 1.5A) |
| Management | Configuration | Via the Serial Port using any ASCLL Terminal |
| | Bandwidth | TCP/IP Control Protocol for effective management and fault correction |
| | Upgrade | Remote Network Upgradeable |
| Audio (optional) | Compression | G.723, PCM (selectable) |
| | Format | Full Duplex Audio |
| | Bit rate | 5.3K/128K |
| | Mode | Stereo or Mono |
| Physical Size | | 215mm X 125mm X 31mm |
| Environment Temperature | | 0° C - 50° C |
| Environment Humidity | | 20%~90% |